

Are You Laying Up Your Treasure?

for where thy treasure is, there will thy heart be also. - Matt. 6:21

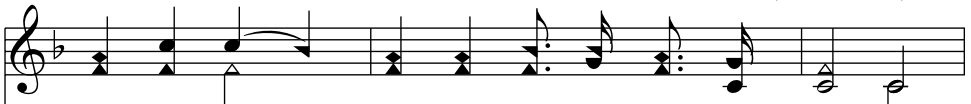
F - 4 - MI

Julia H. Johnston

D. B. Towner, 1898



1. Are you lay - ing up your treas - ure, Where no moth nor rust can
2. Here on earth are scat - tered jew - els, Jew - els that may shine for -
3. Pre - cious souls may be your treas - ure, Gifts of love and deeds of
4. With your treas - ure will your heart be, Are your pre - cious stores laid



ev - er spoil? What shall be the fi - nal meas - ure,
ev - er - more; In the Sav - iour's crown of glo - ry,
mer - cy shown, These may go be - fore to meet you,
up on high? Then your life is rich - er grow - ing,



Chorus



What shall be the gain of earth - ly toil? Lay - ing up your treas - ure,
Will you gath - er these for yon bright shore?
When the Lord of life calls home His own.
While the hast' - ning days are go - ing by.



Heap - ing up the meas - ure In the safe and se - cret place a -



bove. Glad - ly, glad - ly shall we
se - cret place a - bove.



find it, In the realms of light and joy and love.

The image shows a musical score for a vocal line. It consists of two staves: a treble clef staff on top and a bass clef staff on the bottom. The treble staff contains the melody, which starts with a half note 'find', followed by a quarter note 'it,'. The next measure contains the lyrics 'In the realms of light and joy and love.' with a dotted quarter note on 'light' and a quarter note on 'love.'. The bass staff provides a harmonic accompaniment with chords and single notes. The key signature has one flat (B-flat), and the time signature is 4/4. The piece ends with a double bar line.