

Saved To Serve

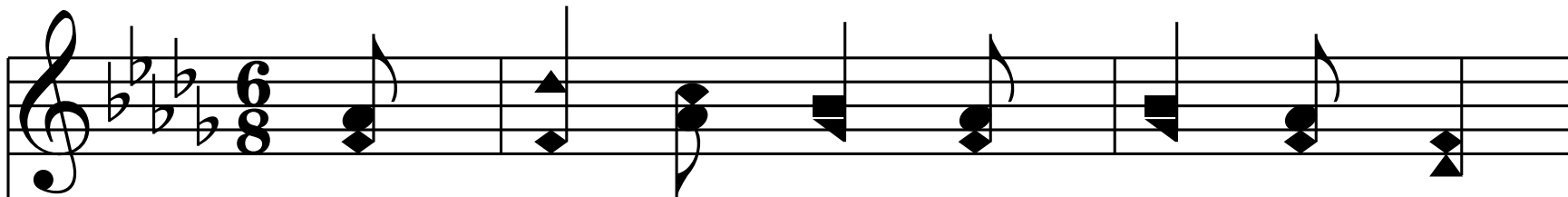
Serve Jehovah with gladness: - Ps. 100:2

D^b - 2 - SOL
John D, Morgan

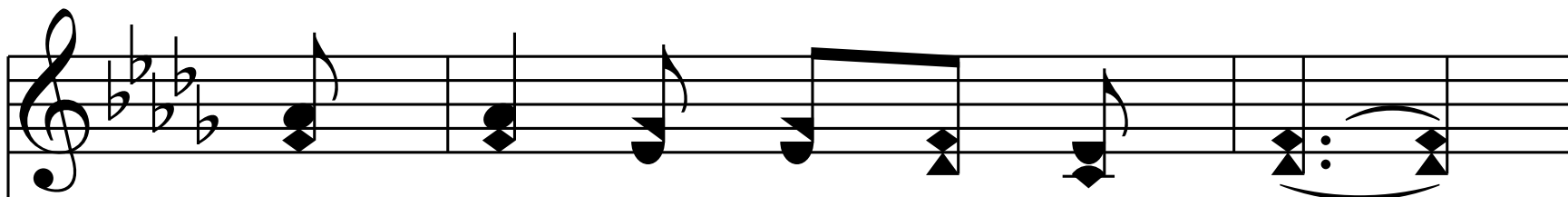
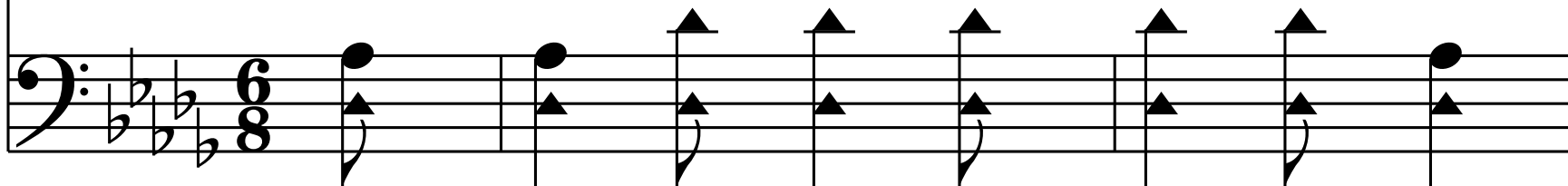
Percy F. Foster, 1901

Public Domain

HymnsToGod.org

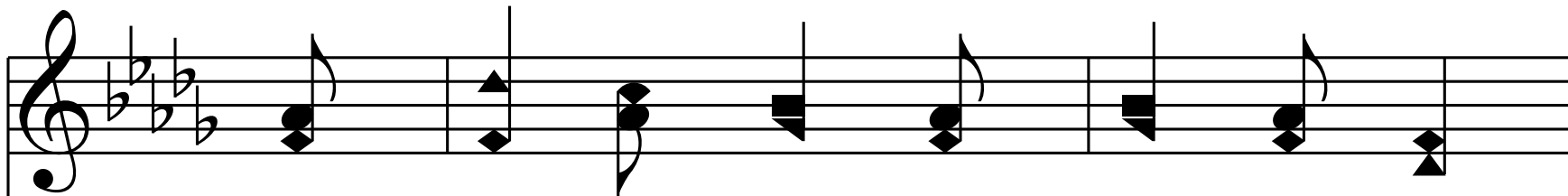


1. To dai - ly die to self and sin,

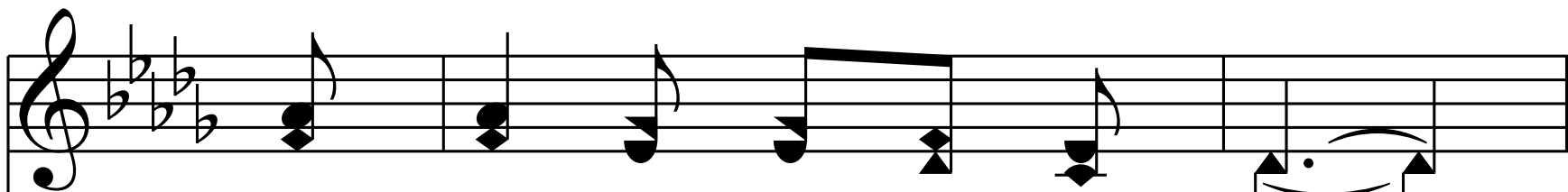
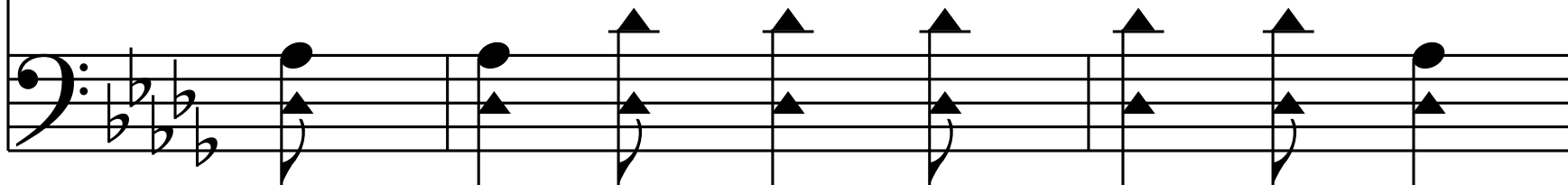


and dai - ly to re - ceive

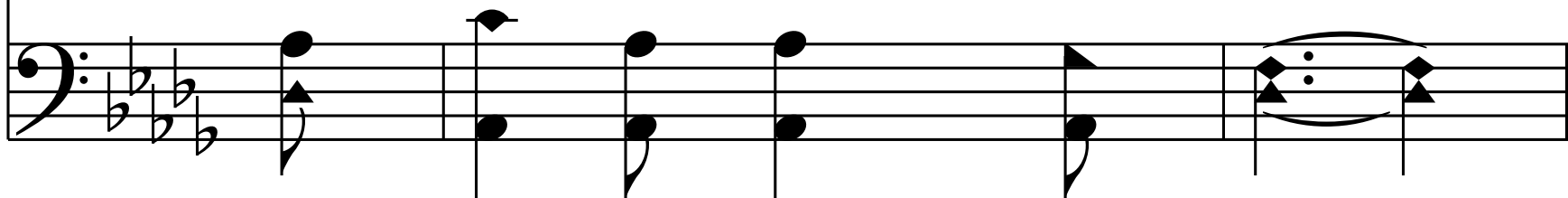




New life from Thee, I pray, O Lord,



and more like Thee to live.



O saved to serve! by Je - sus' blood

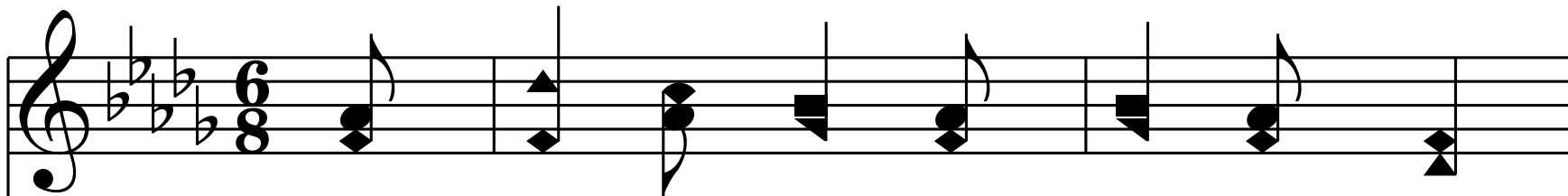
from sin and self made free,

To praise His name, to do His will,

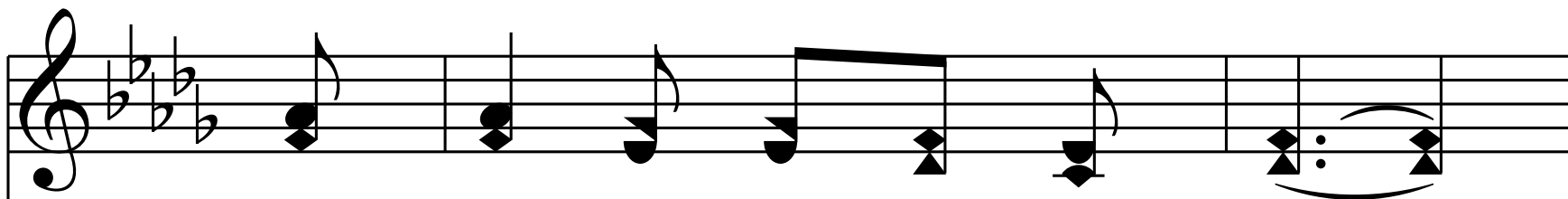
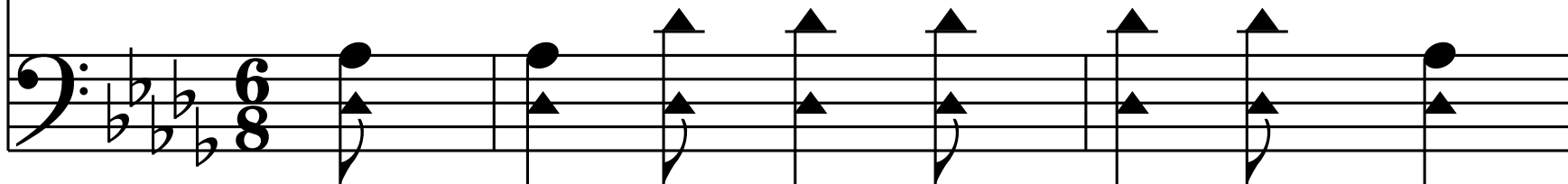
thro' - out e - ter - ni ty. _____

thro' - out e - ter - ni - ty.

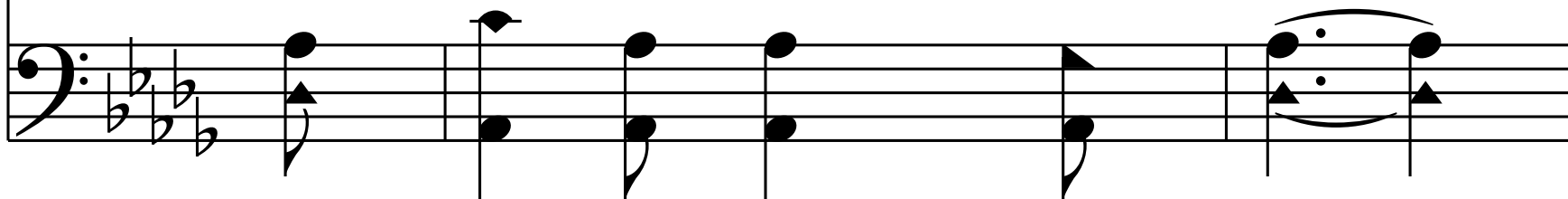
End of Verse 1

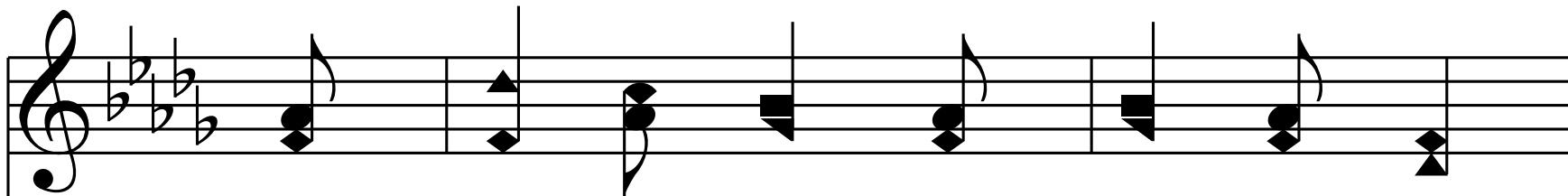


2. To dai - ly die to all things past,

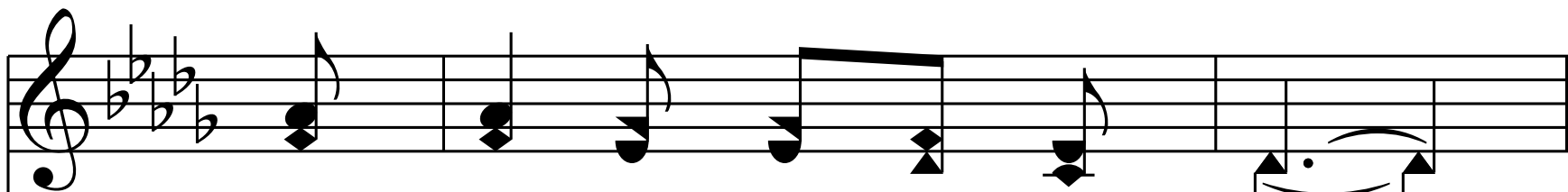
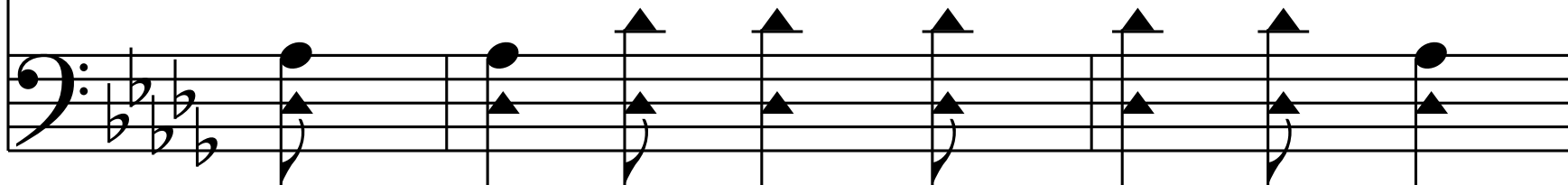


by spir - it, prayer, and word,

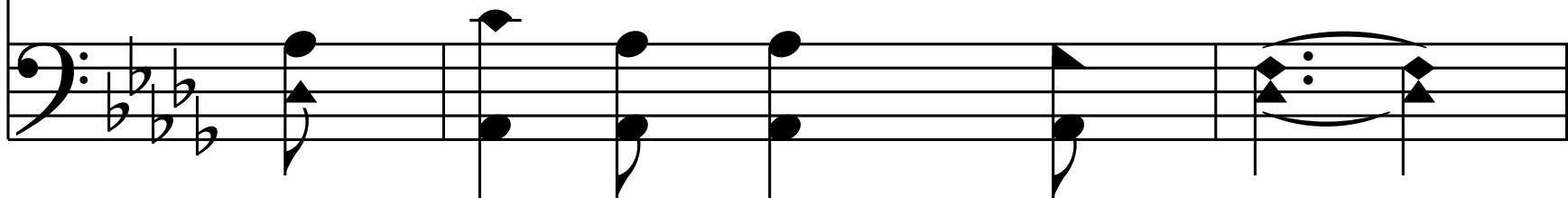




May I in - crease in faith and deed



un - to Thy stat - ure, Lord.



O saved to serve! the field is wide;

This system of musical notation consists of two staves. The upper staff is in treble clef and the lower staff is in bass clef. Both staves begin with a key signature of three flats (B-flat, E-flat, A-flat) and a common time signature. The melody in the treble staff starts with a half note G4, followed by a quarter note A4, a quarter note B4, a quarter note C5, a quarter note B4, a quarter note A4, a quarter note G4, and a quarter note F4. The bass staff provides a harmonic accompaniment with a half note G3, a quarter note A3, a quarter note B3, a quarter note C4, a quarter note B3, a quarter note A3, a quarter note G3, and a quarter note F3. The lyrics 'O saved to serve! the field is wide;' are positioned between the two staves.

what I can do is small;

This system of musical notation consists of two staves. The upper staff is in treble clef and the lower staff is in bass clef. Both staves continue the key signature of three flats and common time. The melody in the treble staff starts with a half note G4, followed by a quarter note A4, a quarter note B4, a quarter note C5, a quarter note B4, a quarter note A4, a quarter note G4, and a quarter note F4. The bass staff provides a harmonic accompaniment with a half note G3, a quarter note A3, a quarter note B3, a quarter note C4, a quarter note B3, a quarter note A3, a quarter note G3, and a quarter note F3. The lyrics 'what I can do is small;' are positioned between the two staves.

With joy - ful heart and hand, O Lord,

I give to Thee my all. _____

I give to Thee my all.

End of Verse 2

Musical notation for the first staff, treble clef, 6/8 time signature, key signature of three flats. The melody consists of eighth notes and quarter notes.

3. Tho' dark the way, tho' long the strife,

Musical notation for the second staff, bass clef, 6/8 time signature, key signature of three flats. The accompaniment consists of quarter notes and eighth notes.

Musical notation for the third staff, treble clef, 6/8 time signature, key signature of three flats. The melody includes a long note with a slur and a repeat sign.

I thro' the Spir - it's might

Musical notation for the fourth staff, bass clef, 6/8 time signature, key signature of three flats. The accompaniment includes a long note with a slur and a repeat sign.

The first staff of music is written in treble clef with a key signature of three flats (B-flat, E-flat, A-flat). It consists of seven measures. The notes are: G4 (quarter), F4 (quarter), E4 (quarter), D4 (quarter), C4 (quarter), B3 (quarter), and A3 (quarter). The notes are grouped into pairs of beamed eighth notes in the first three measures, and then as single notes in the last four measures.

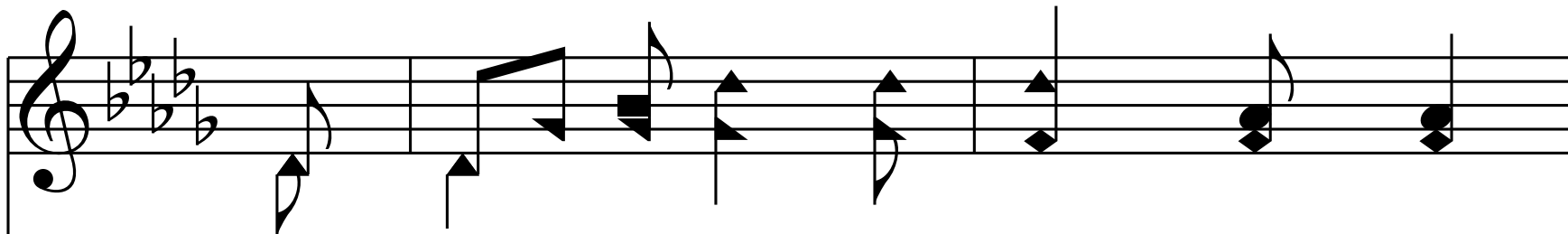
Shall strive for Thee, Thy king-dom's weal,

The second staff of music is written in bass clef with a key signature of three flats. It consists of seven measures. The notes are: G3 (quarter), F3 (quarter), E3 (quarter), D3 (quarter), C3 (quarter), B2 (quarter), and A2 (quarter). The notes are grouped into pairs of beamed eighth notes in the first three measures, and then as single notes in the last four measures.

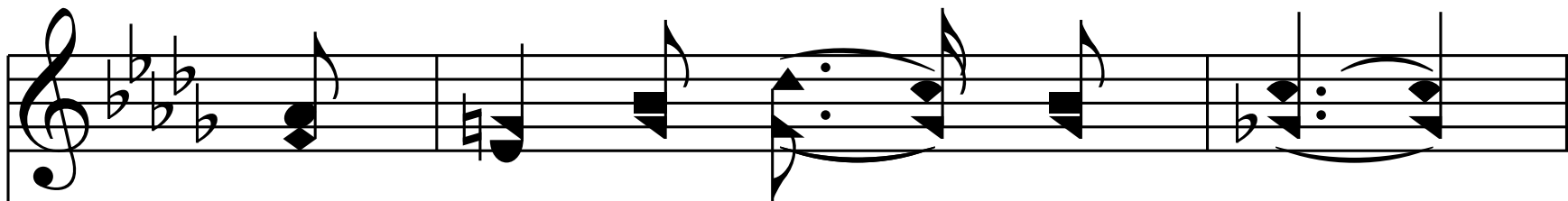
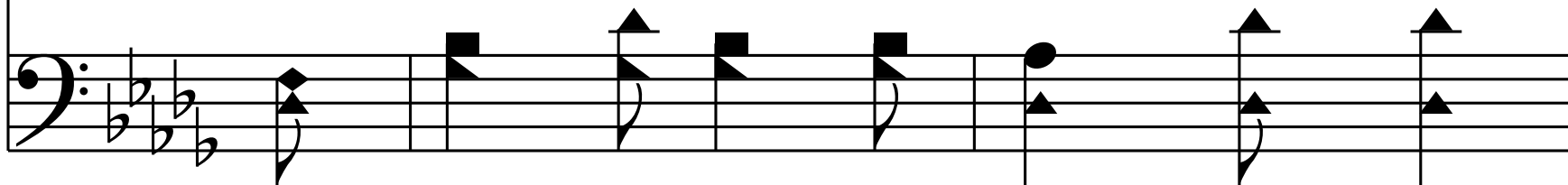
The third staff of music is written in treble clef with a key signature of three flats. It consists of seven measures. The notes are: G4 (quarter), F4 (quarter), E4 (quarter), D4 (quarter), C4 (quarter), B3 (quarter), and A3 (quarter). The notes are grouped into pairs of beamed eighth notes in the first three measures, and then as single notes in the last four measures.

and for e - ter - nal right;

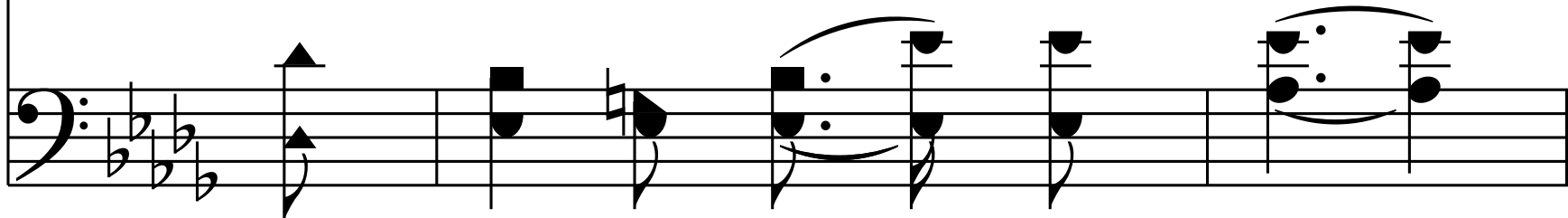
The fourth staff of music is written in bass clef with a key signature of three flats. It consists of seven measures. The notes are: G3 (quarter), F3 (quarter), E3 (quarter), D3 (quarter), C3 (quarter), B2 (quarter), and A2 (quarter). The notes are grouped into pairs of beamed eighth notes in the first three measures, and then as single notes in the last four measures.

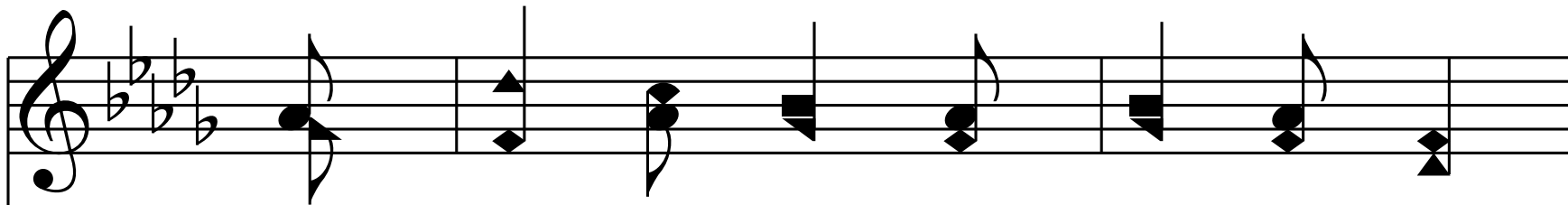


Then saved to serve! in heav'ns bright sphere

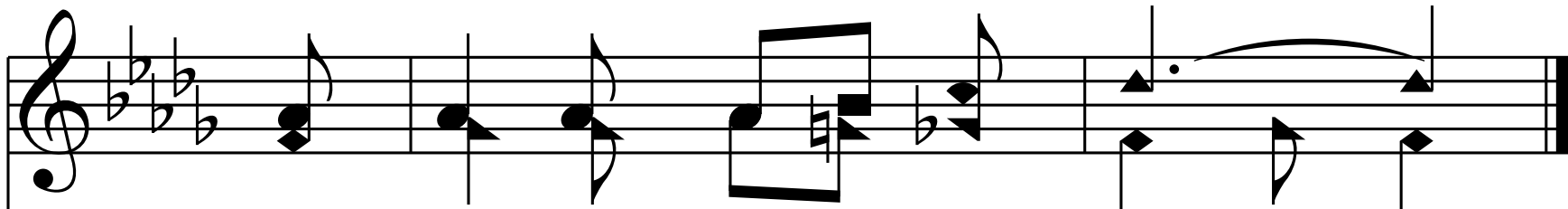
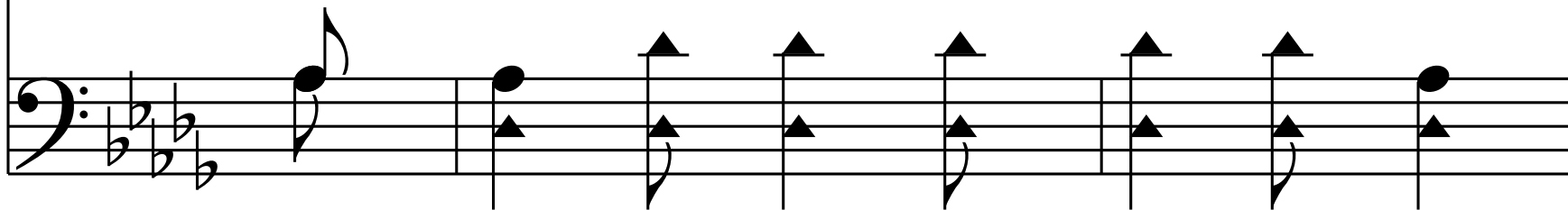


I shall with an - gels sing,

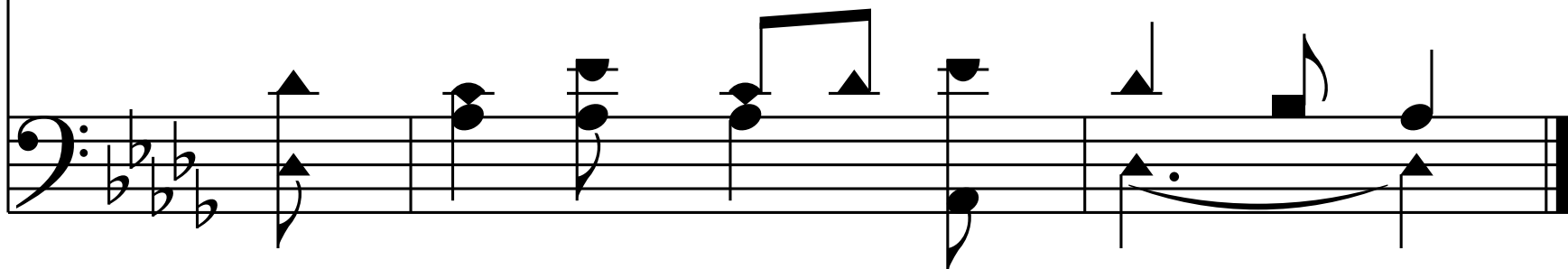




And saved by grace be - hold Thy face,



my Sav-iour, Lord, and King. _____
Sav - iour, Lord, and King.



End of Hymn