

Silent Night

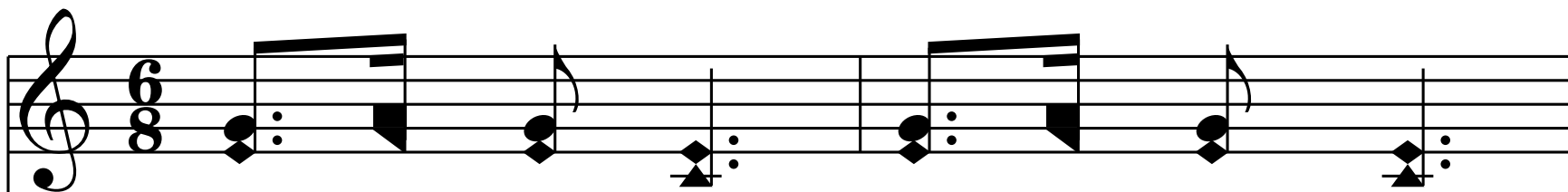
*for there is born to you this day in the city of David
a Saviour, who is Christ the Lord. - Lk. 2:11*

C - 2 - SOL
Joseph Mohr

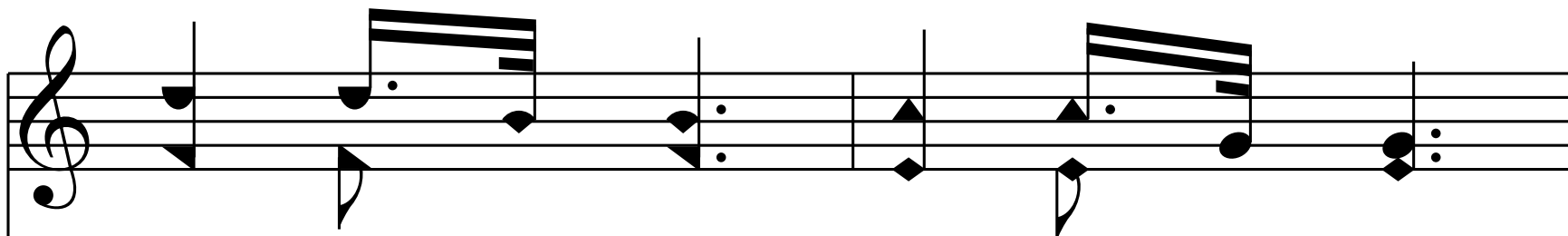
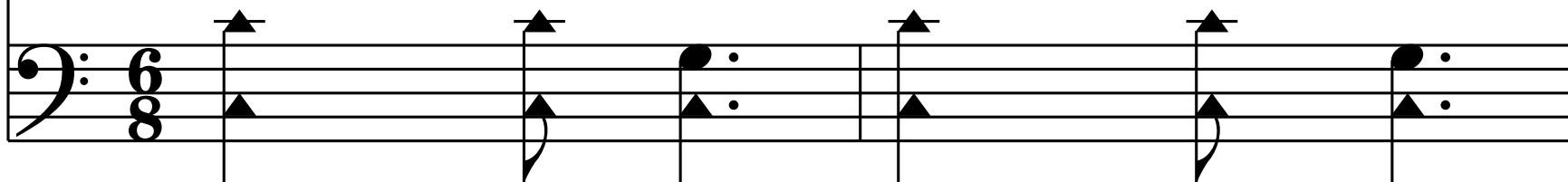
Franz Gruber

Public Domain

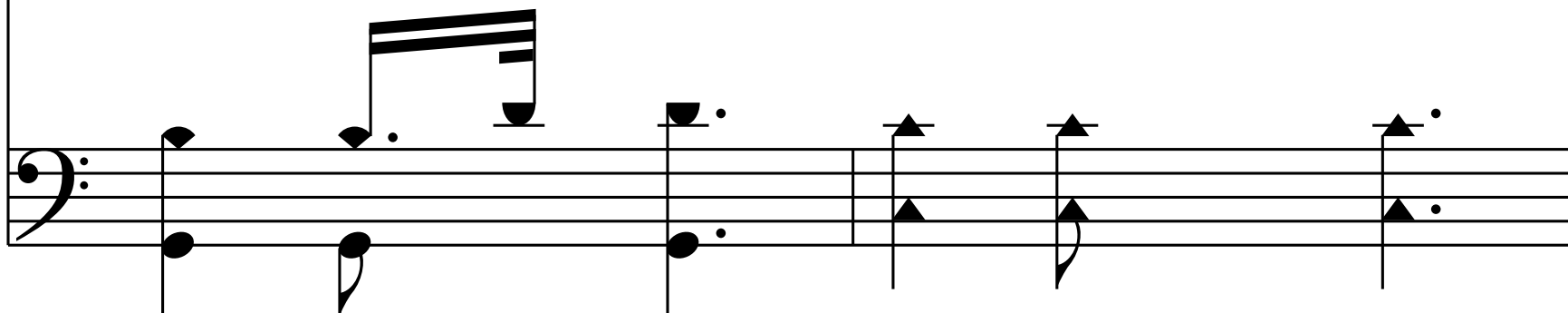
HymnsToGod.org

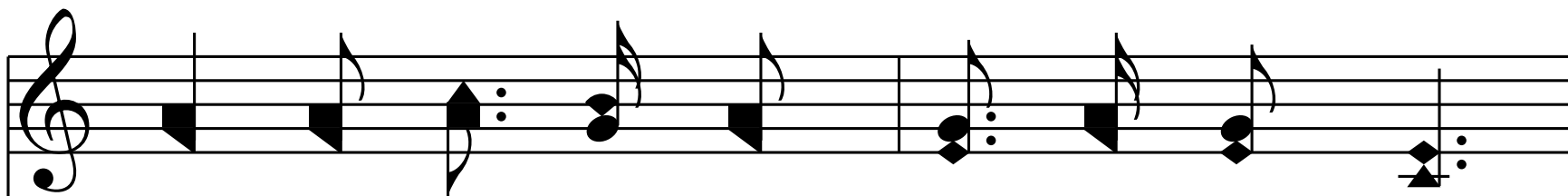


1. Si - lent night! hal - lowed night!

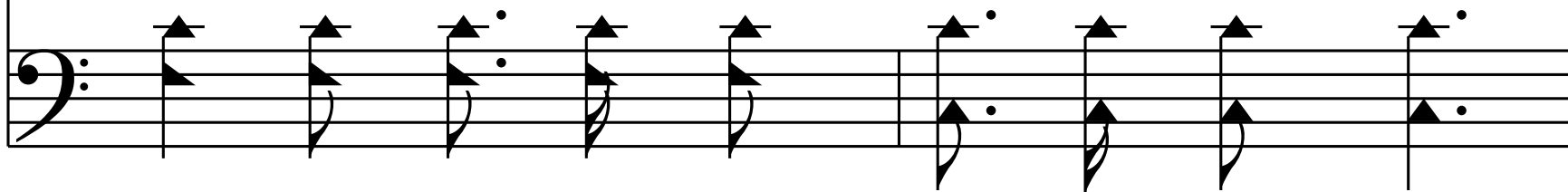


Land and deep si - lent sleep!

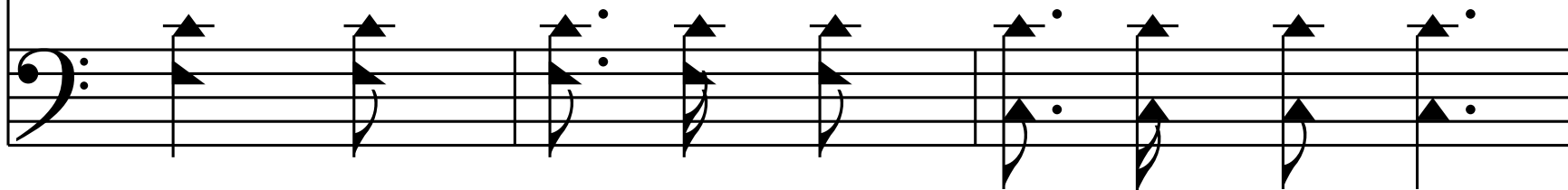
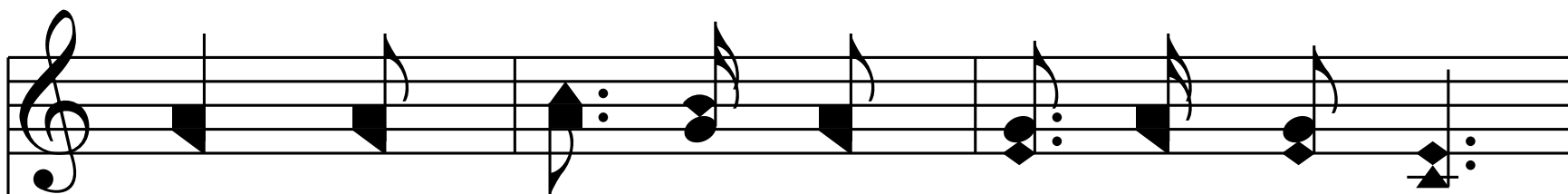





Soft - ly glit - ters bright Beth - le - hem's star,

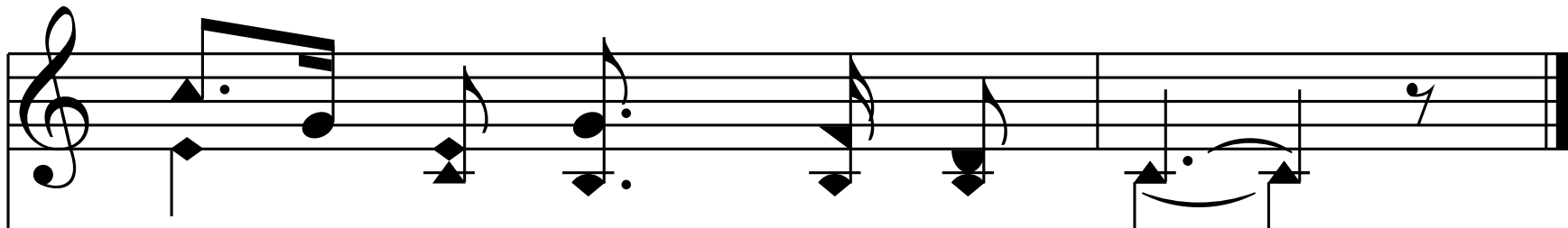
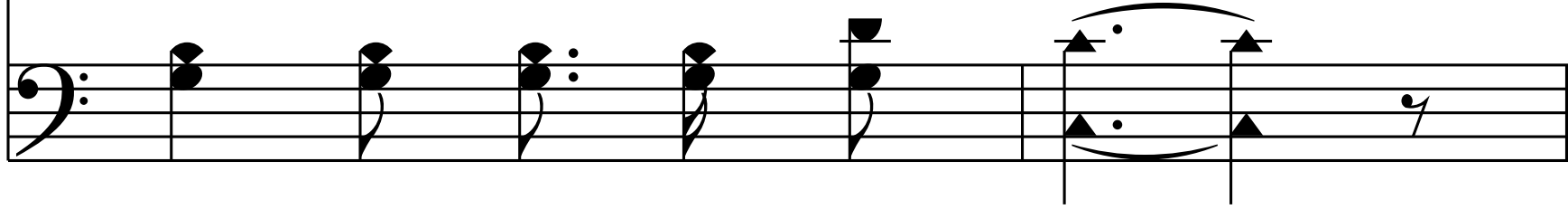


Beck' - ning Is - ra - el's eye from a - far,





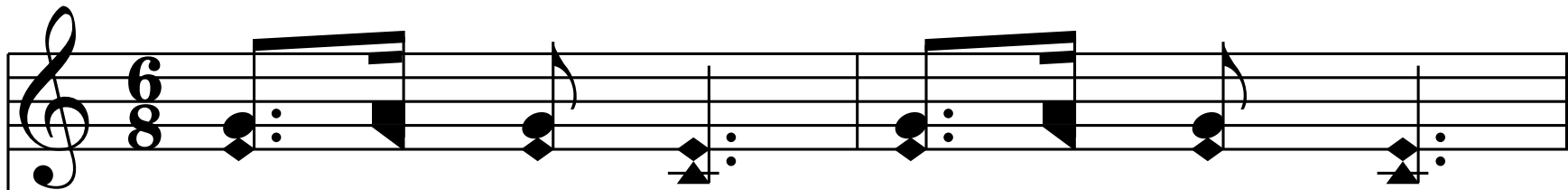
Where the Sav - ior is born,



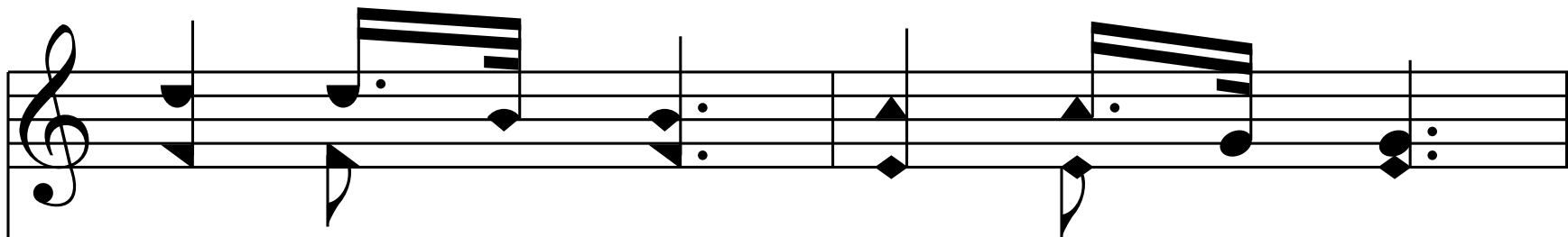
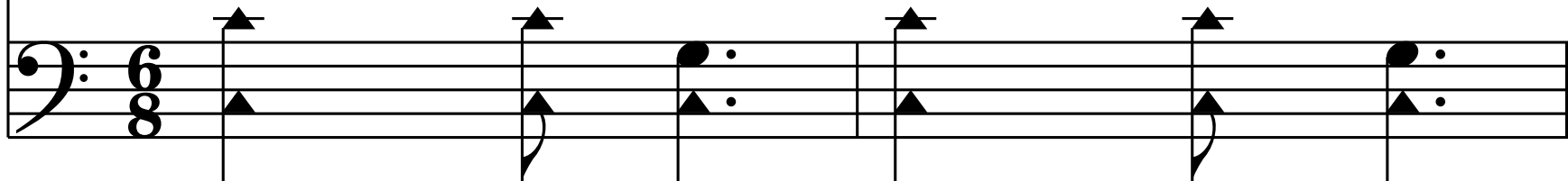
Where the Sav - ior is born.



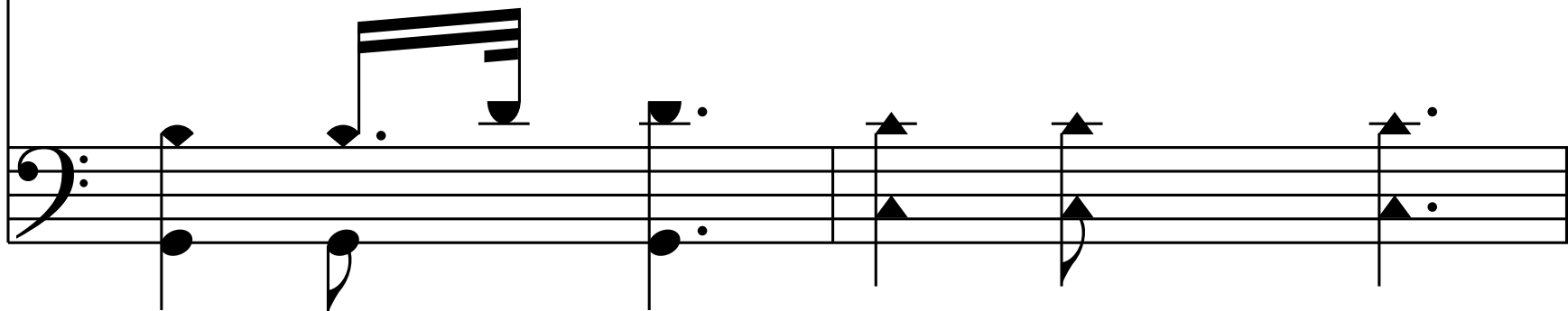
End of Verse 1

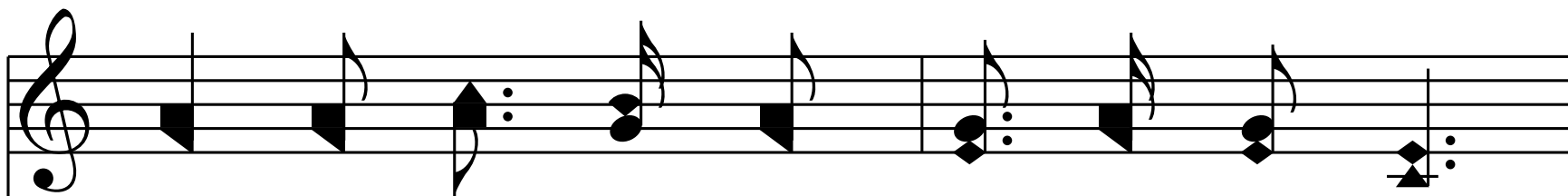


2. Si - lent night! hal - lowed night!

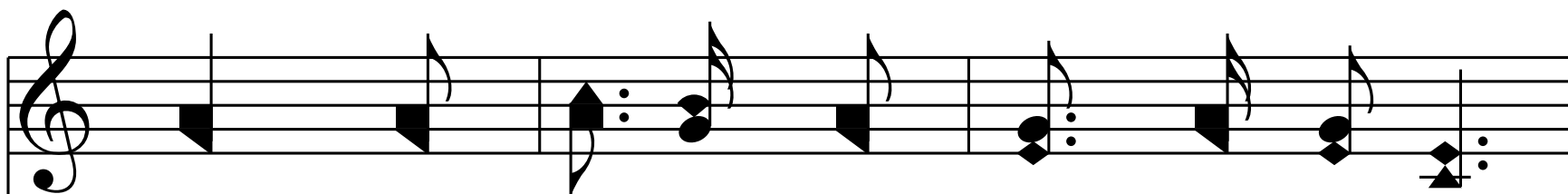
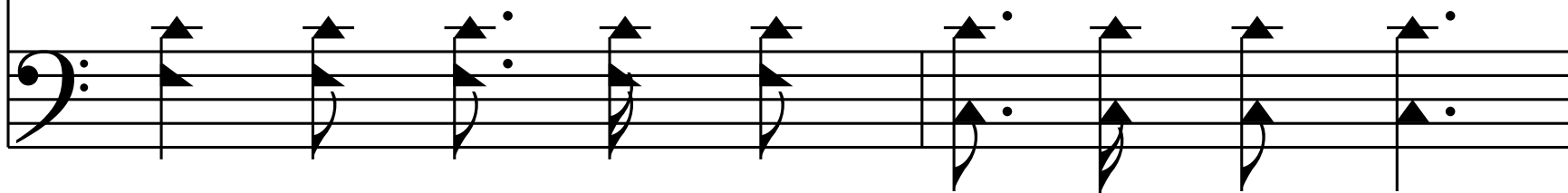


On the plain wakes the strain,

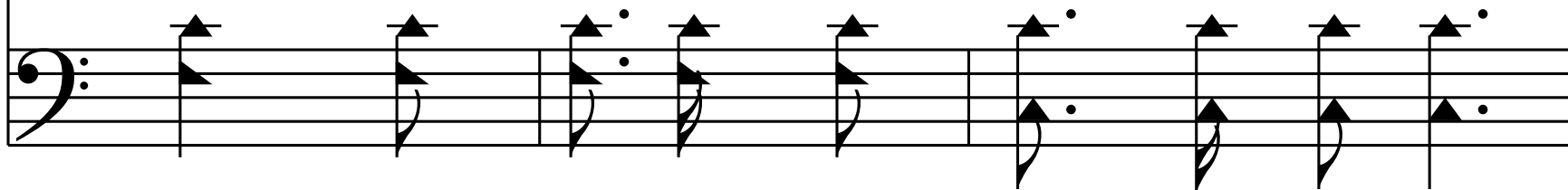




Sung by heav-en - ly har - gin - gers bright,



Fraught with ti - dings of bound-less de-light;



Musical notation for the first staff of the first system, featuring a treble clef and a series of notes with stems pointing down.

Christ the Sav - ior has come,

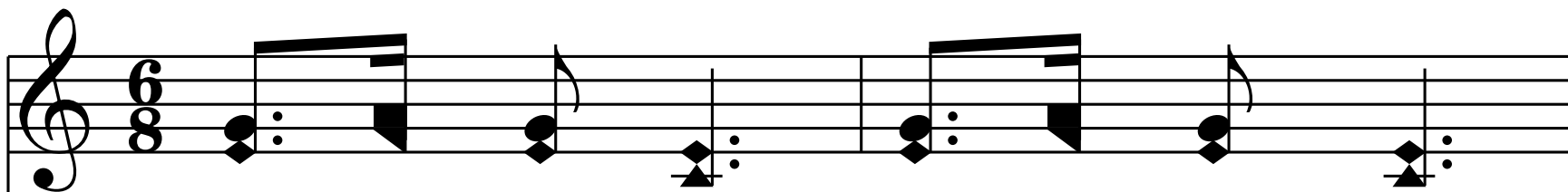
Musical notation for the second staff of the first system, featuring a bass clef and a series of notes with stems pointing up.

Musical notation for the first staff of the second system, featuring a treble clef and a series of notes with stems pointing down.

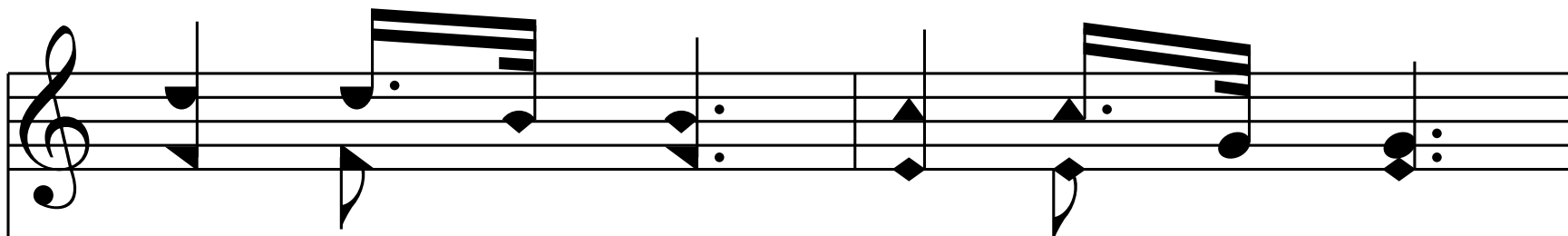
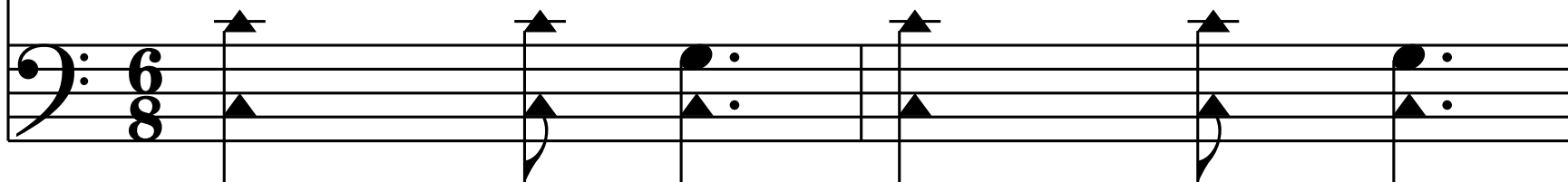
Christ the Sav - ior has come.

Musical notation for the second staff of the second system, featuring a bass clef and a series of notes with stems pointing up.

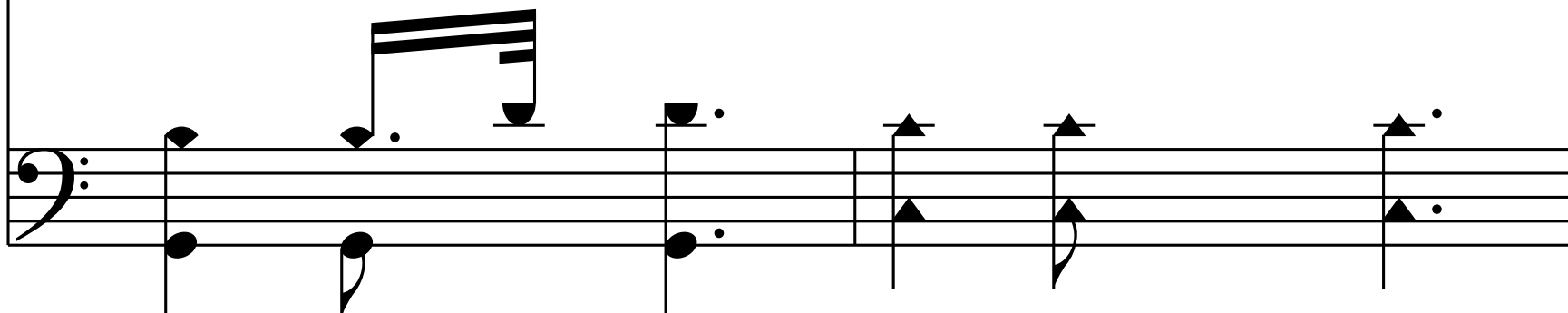
End of Verse 2

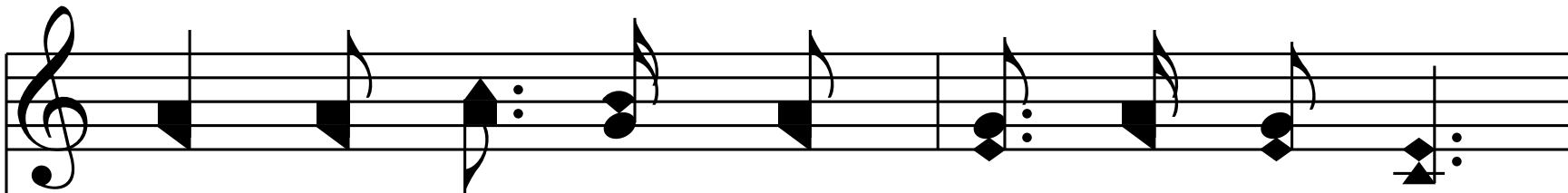


3. Si - lent night! hal - lowed night!

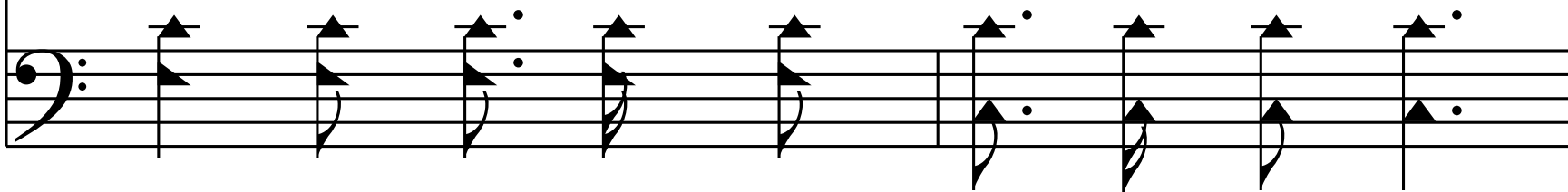


Earth a - wake, si - lence break;

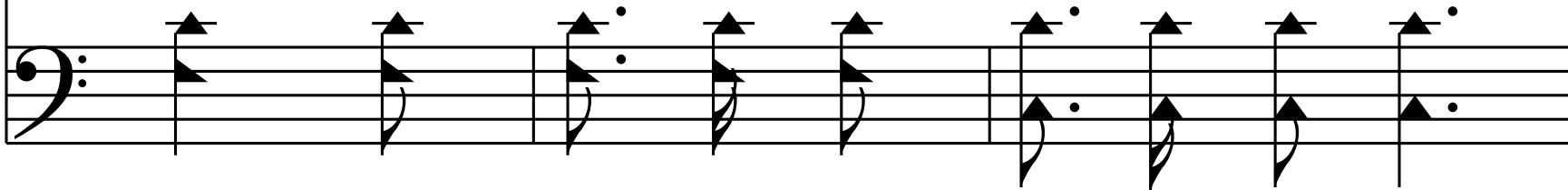
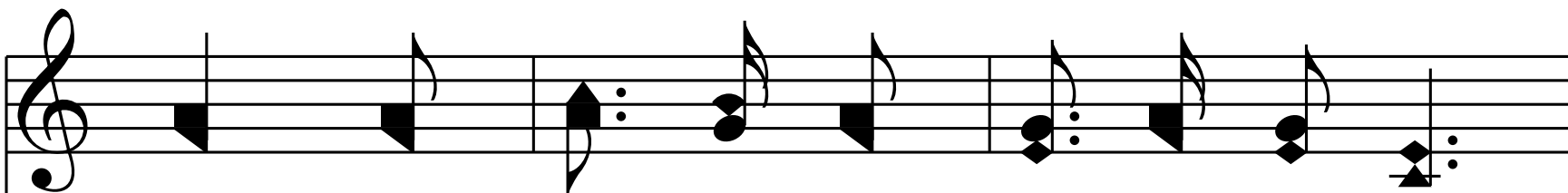




High your an - thems of mel - o - dy raise,



Heav'n and earth in full cho - rus of praise;



Musical notation for the first system, treble clef. The staff contains six measures of music. The first five measures consist of quarter notes: G4, A4, B4, A4, G4. The sixth measure contains a half note G4 with a fermata above it, and a quarter note G4 below it. A final fermata is placed at the end of the staff.

Peace for - ev - er shall reign,

Musical notation for the first system, bass clef. The staff contains six measures of music. The first five measures consist of quarter notes: G3, A3, B3, A3, G3. The sixth measure contains a half note G3 with a fermata above it, and a quarter note G3 below it. A final fermata is placed at the end of the staff.

Musical notation for the second system, treble clef. The staff contains six measures of music. The first five measures consist of quarter notes: G4, A4, B4, A4, G4. The sixth measure contains a half note G4 with a fermata above it, and a quarter note G4 below it. A final fermata is placed at the end of the staff.

Peace for - ev - er shall reign.

Musical notation for the second system, bass clef. The staff contains six measures of music. The first five measures consist of quarter notes: G3, A3, B3, A3, G3. The sixth measure contains a half note G3 with a fermata above it, and a quarter note G3 below it. A final fermata is placed at the end of the staff.

End of Hymn