

Sweeter and Dearer

*Oh give thanks unto the God of heaven; For his
lovingkindness endureth for ever. - Ps. 136:26*

G - 2 - SOL
James Rowe

I. E. Reynolds, 1915

Public Domain

HymnsToGod.org

1. How sweet is the love of my Sav - ior and King,

For - ev - er my song it shall be;

For day af - ter day, while its prais - es I sing,

'Tis grow - ing still sweet - er to me

Chorus

The first system of the chorus consists of two staves. The treble staff begins with a treble clef and a key signature of one sharp (F#). The melody starts on a quarter note G4, followed by eighth notes A4, B4, C5, D5, E5, and F#5. The bass staff begins with a bass clef and the same key signature. The accompaniment starts on a quarter note G2, followed by eighth notes A2, B2, C3, D3, E3, and F#3. The system concludes with a half note G4 in the treble and a half note G2 in the bass, both with a fermata.

'Tis sweet-er and dear-er each day, _____
each day,

The second system of the chorus continues the melody and accompaniment. The treble staff continues with eighth notes G4, A4, B4, C5, D5, and E5. The bass staff continues with eighth notes G2, A2, B2, C3, D3, and E3. The system concludes with a half note G4 in the treble and a half note G2 in the bass, both with a fermata.

And sweet-er and dear-er 'twill be; _____
'twill be;

The third system of the chorus continues the melody and accompaniment. The treble staff continues with eighth notes G4, A4, B4, C5, D5, and E5. The bass staff continues with eighth notes G2, A2, B2, C3, D3, and E3. The system concludes with a half note G4 in the treble and a half note G2 in the bass, both with a fermata.

While here I re - main, and when heav - en I gain,

It still will grow sweet - er to me.

End of Verse 1

2. It light-ens my sor-rows, and troub-le and care.

And caus - es my path - way to shine;

It helps me for Je - sus to do and to dare,

And nev - er will let me re - pine.

Chorus

The first system of the chorus consists of two staves. The upper staff is in treble clef and the lower staff is in bass clef. Both are in G major, indicated by a sharp sign on the F line. The melody in the treble staff begins with a quarter note G4, followed by eighth notes A4, B4, C5, D5, E5, and F5. The bass staff provides accompaniment with a quarter note G2, followed by eighth notes A2, B2, C3, D3, E3, and F3. The system concludes with a half note G4 in the treble and a half note G2 in the bass, both held over by a fermata.

'Tis sweet-er and dear-er each day, _____
each day,

The second system of the chorus continues the melody and accompaniment. The treble staff continues with eighth notes G4, A4, B4, C5, D5, and E5, followed by a quarter note F5. The bass staff continues with eighth notes G2, A2, B2, C3, D3, and E3, followed by a quarter note F3. The system concludes with a half note G4 in the treble and a half note G2 in the bass, both held over by a fermata.

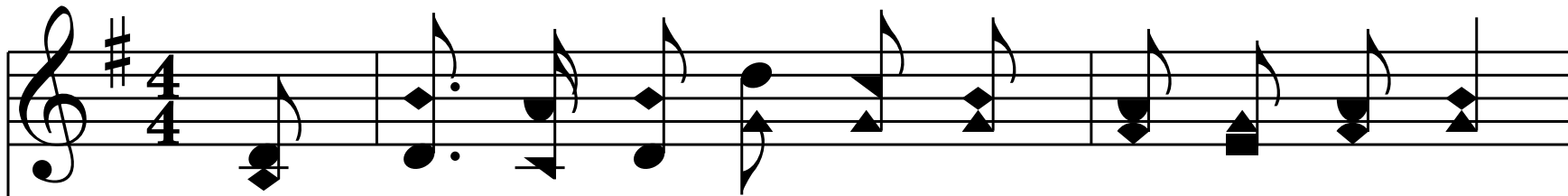
And sweet-er and dear-er 'twill be; _____
'twill be;

The third system of the chorus continues the melody and accompaniment. The treble staff continues with eighth notes G4, A4, B4, C5, D5, and E5, followed by a quarter note F5. The bass staff continues with eighth notes G2, A2, B2, C3, D3, and E3, followed by a quarter note F3. The system concludes with a half note G4 in the treble and a half note G2 in the bass, both held over by a fermata.

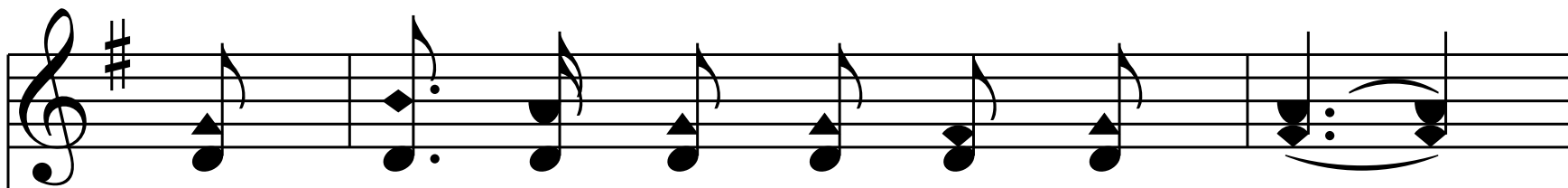
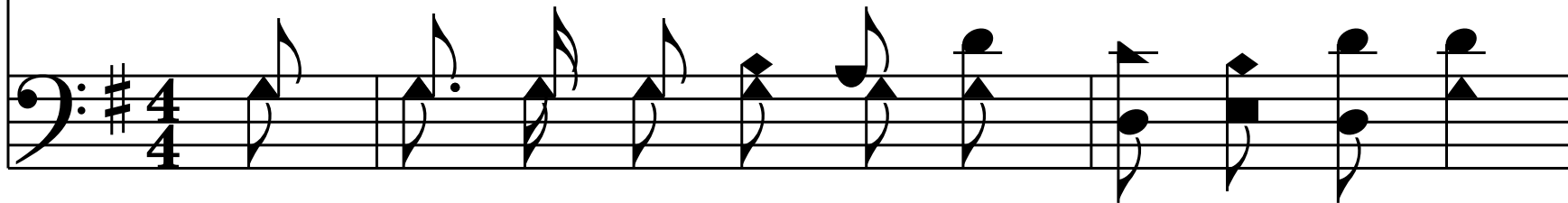
While here I re - main, and when heav - en I gain,

It still will grow sweet - er to me.

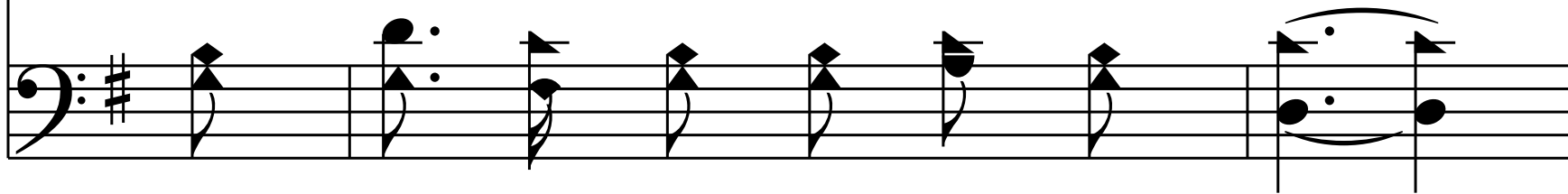
End of Verse 2



3. It gives me a car - ol to sing thro, the night,



And cheers my soul on - ward each day;



So tru - ly I trust it till faith end in sight,

And shad - ows have fad - ed a - way.

Chorus

'Tis sweet-er and dear-er each day, _____
each day,

And sweet-er and dear-er 'twill be; _____
'twill be;

While here I re - main, and when heav - en I gain,

It still will grow sweet - er to me.

End of Hymn