

# 'Tis So Sweet To Trust In Jesus

*And again, I will put my trust in him. And again, Behold, I  
and the children whom God hath given me - Heb. 2:13*

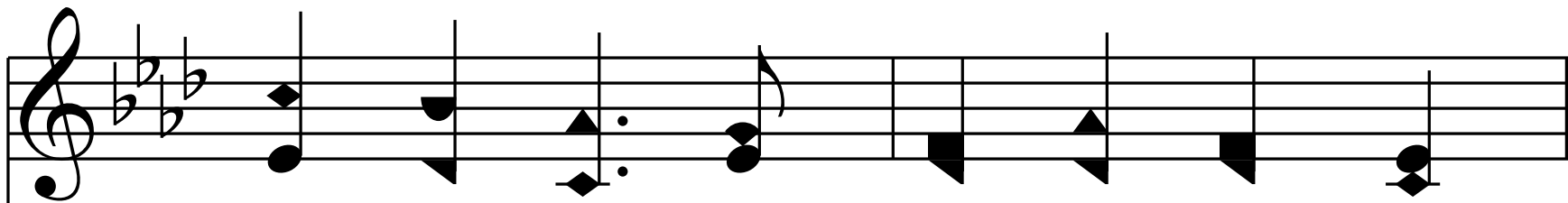
Ab - 4 - MI

Louisa M. R. Stead, 1882

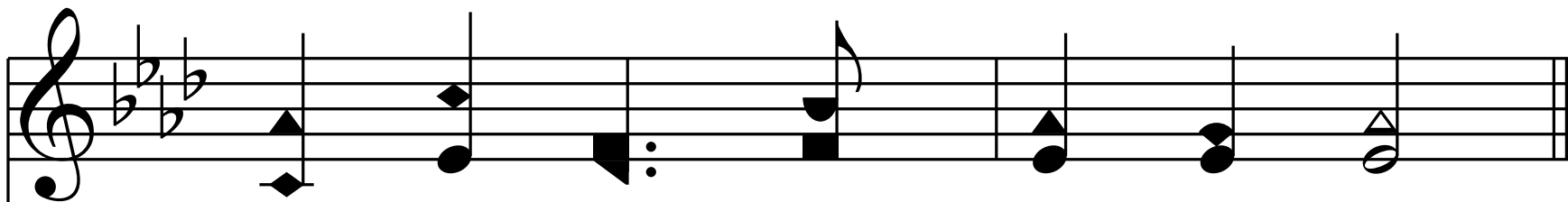
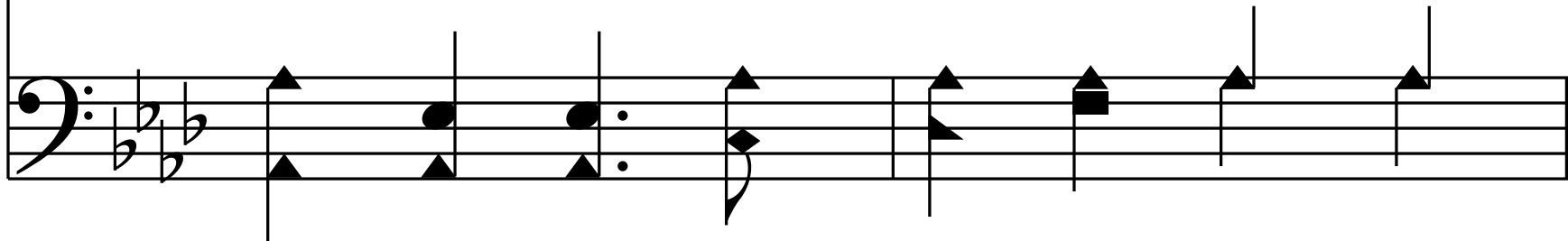
William J. Kirkpatrick, 1882

1. 'Tis so sweet to trust in Je - sus,

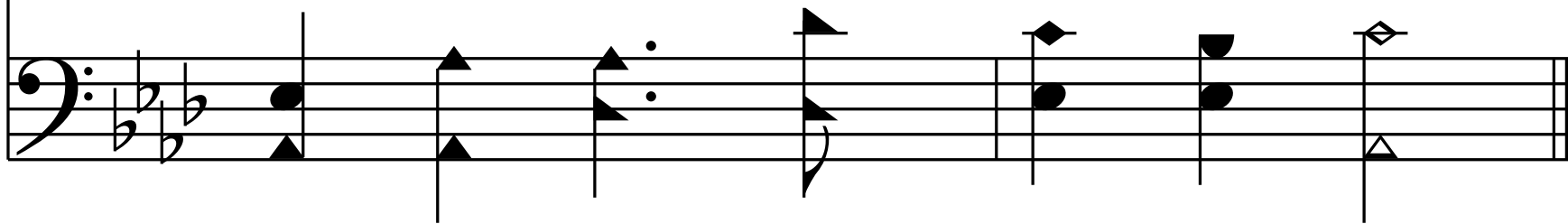
Just to take him at his word;



Just to rest up - on his prom-ise;



Just to know, "Thus saith the Lord."



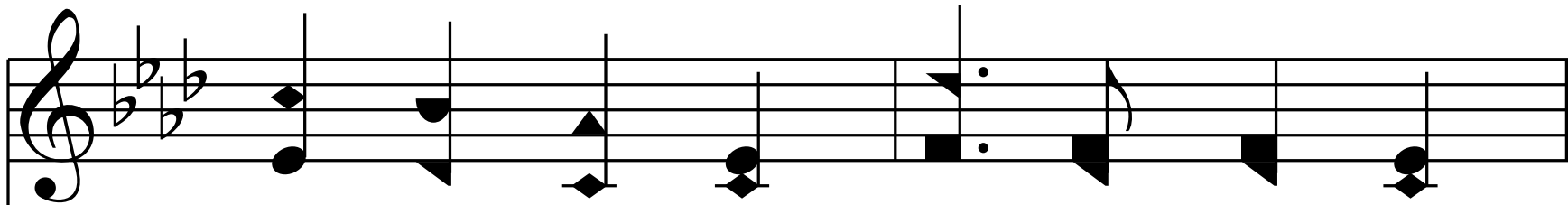
*Refrain*

Je - sus, Je - sus how I trust him!

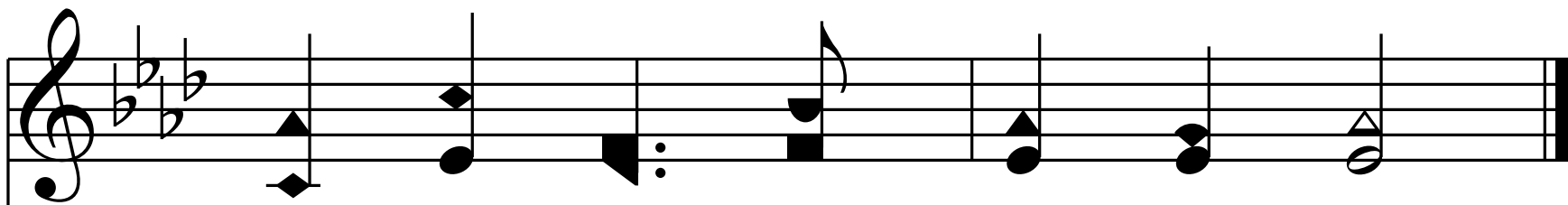
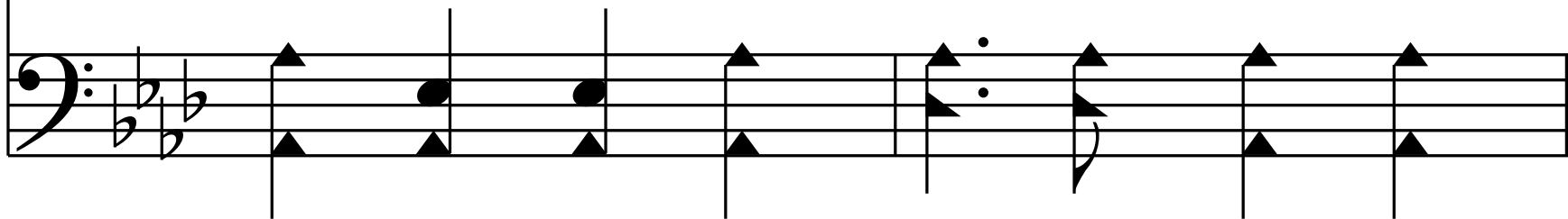
The first system of the refrain consists of two staves. The upper staff is in treble clef with a key signature of three flats (B-flat, E-flat, A-flat) and a common time signature. It contains a melody of quarter notes: G4, A4, B-flat4, A4, G4, F4, E-flat4, D4. The lower staff is in bass clef with the same key signature and time signature. It contains a bass line of quarter notes: C3, D3, E-flat3, F3, G3, A3, B-flat3, C4. The lyrics 'Je - sus, Je - sus how I trust him!' are centered between the two staves.

How I've proved him o'er and o'er!

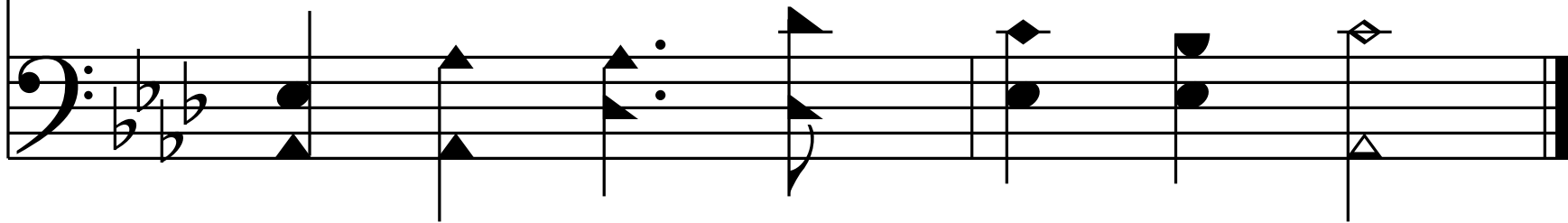
The second system of the refrain consists of two staves. The upper staff is in treble clef with a key signature of three flats and a common time signature. It contains a melody of quarter notes: G4, A4, B-flat4, A4, G4, F4, E-flat4, D4. The lower staff is in bass clef with the same key signature and time signature. It contains a bass line of quarter notes: C3, D3, E-flat3, F3, G3, A3, B-flat3, C4. The lyrics 'How I've proved him o'er and o'er!' are centered between the two staves.



Je - sus, Je - sus pre - cious Je - sus!



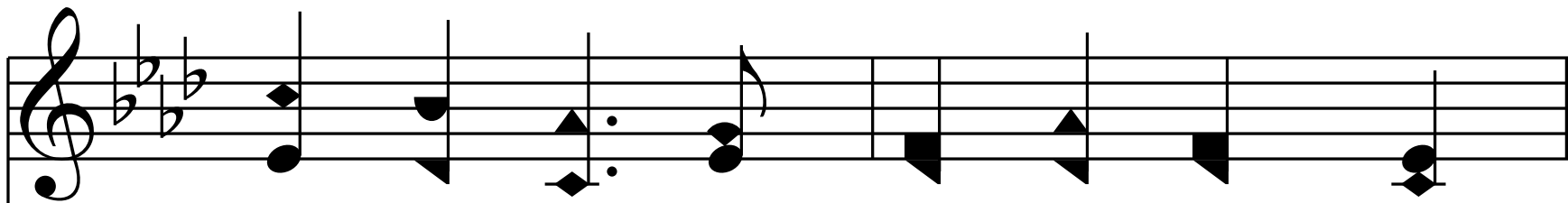
O for grace to trust him more.



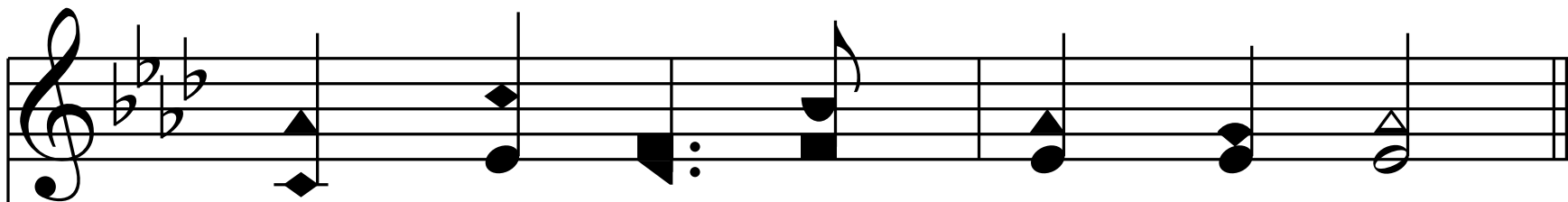
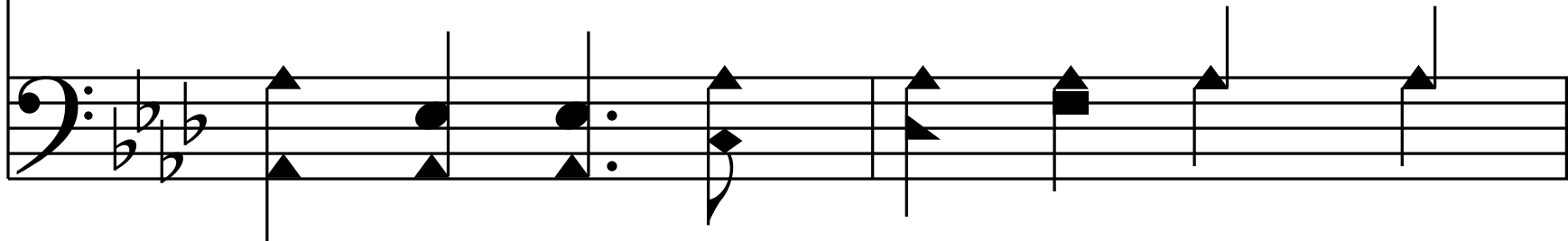
End of Vs. 1

2. O how sweet to trust in Je - sus,

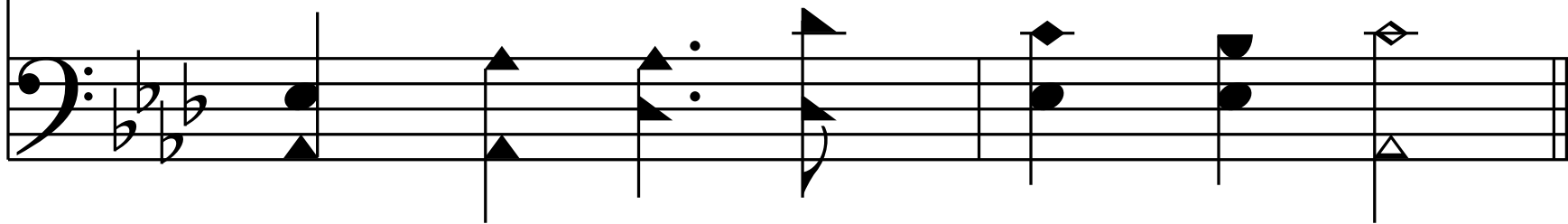
Just to trust his cleans-ing blood;



Just in sim - ple faith to plunge me



'Neath the heal - ing, cleans - ing flood,



*Refrain*

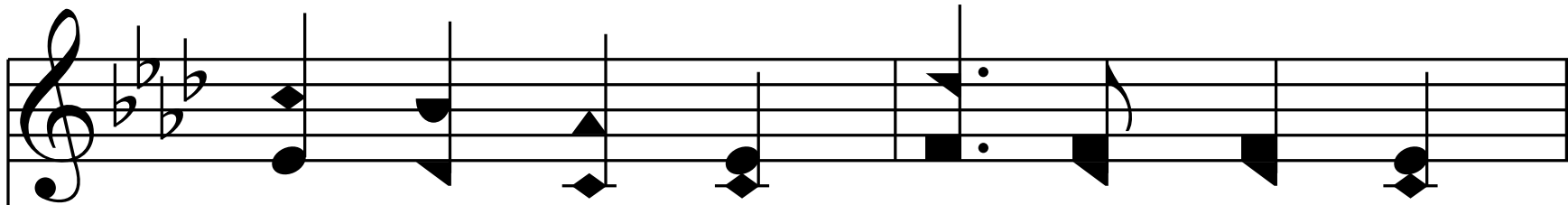
Je - sus, Je - sus how I trust him!

The first system of the refrain consists of two staves. The upper staff is in treble clef with a key signature of three flats (B-flat, E-flat, A-flat) and a common time signature. It contains a melody of quarter notes: G4, A4, B-flat4, A4, G4, F4, E-flat4, D4. The lower staff is in bass clef with the same key signature and time signature. It contains a bass line of quarter notes: G2, A2, B-flat2, A2, G2, F2, E-flat2, D2. The lyrics 'Je - sus, Je - sus how I trust him!' are centered between the two staves.

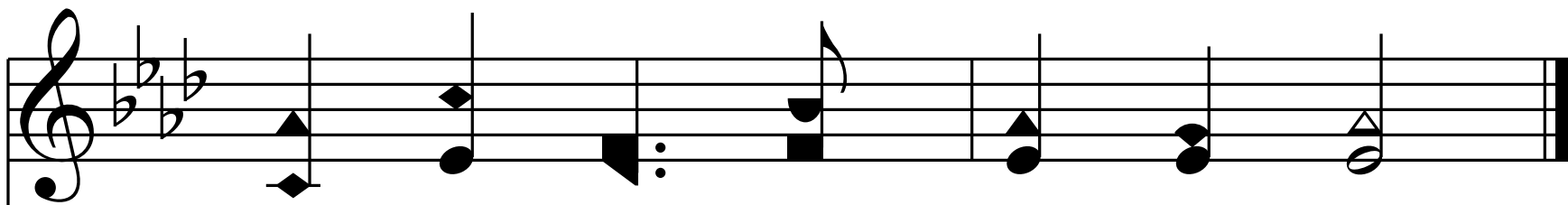
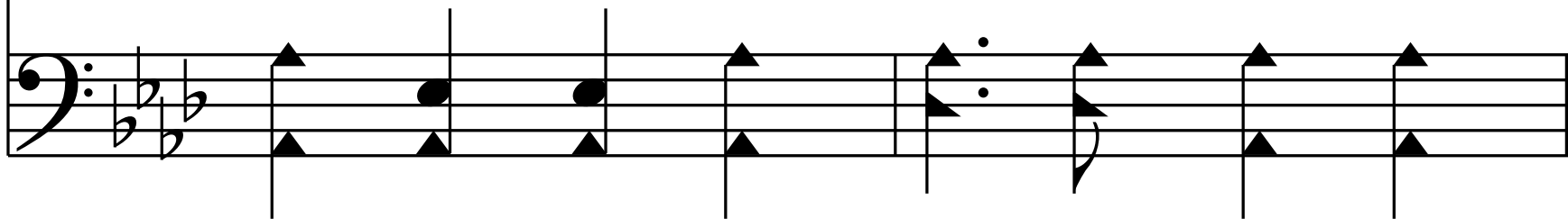
How I've proved him o'er and o'er!

The second system of the refrain consists of two staves. The upper staff is in treble clef with a key signature of three flats and a common time signature. It contains a melody of quarter notes: G4, A4, B-flat4, A4, G4, F4, E-flat4, D4. The lower staff is in bass clef with the same key signature and time signature. It contains a bass line of quarter notes: G2, A2, B-flat2, A2, G2, F2, E-flat2, D2. The lyrics 'How I've proved him o'er and o'er!' are centered between the two staves.

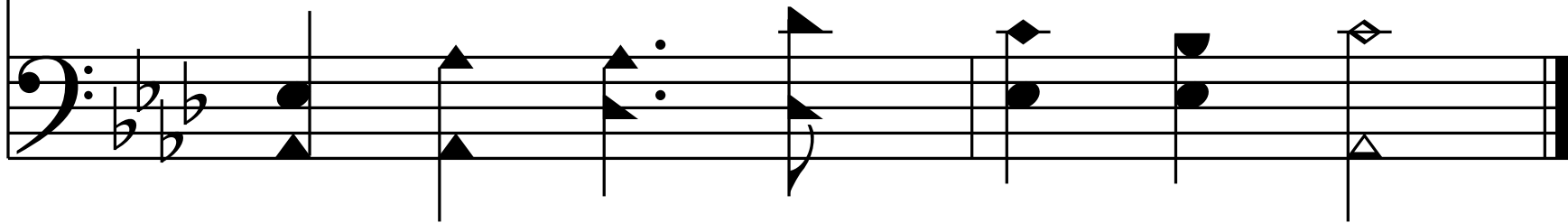




Je - sus, Je - sus pre - cious Je - sus!



O for grace to trust him more.

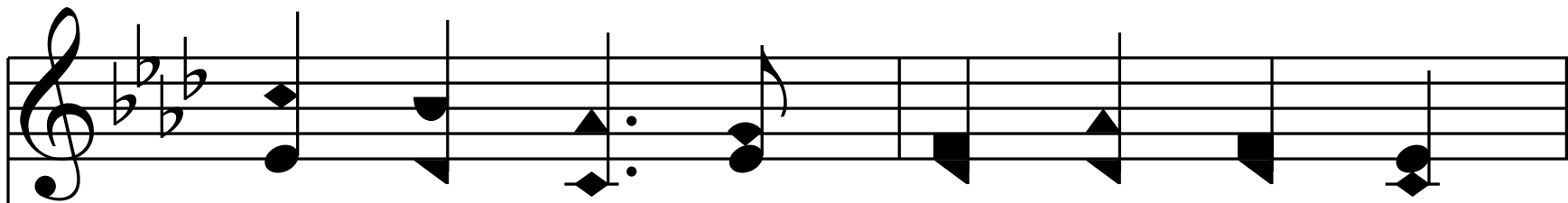


3. Yes, 'tis sweet to trust in Je - sus,

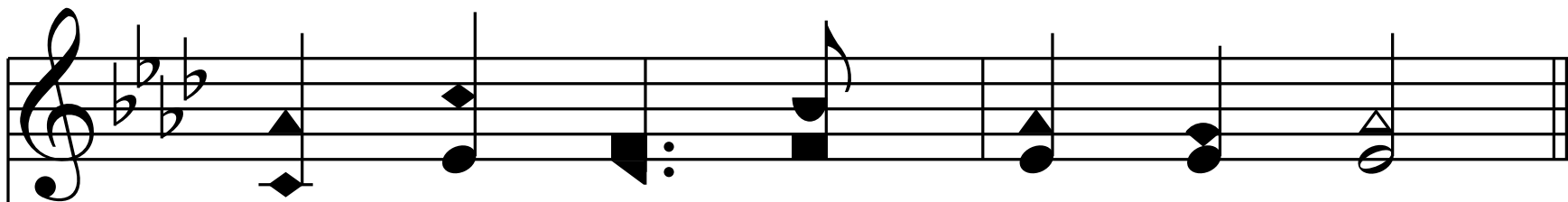
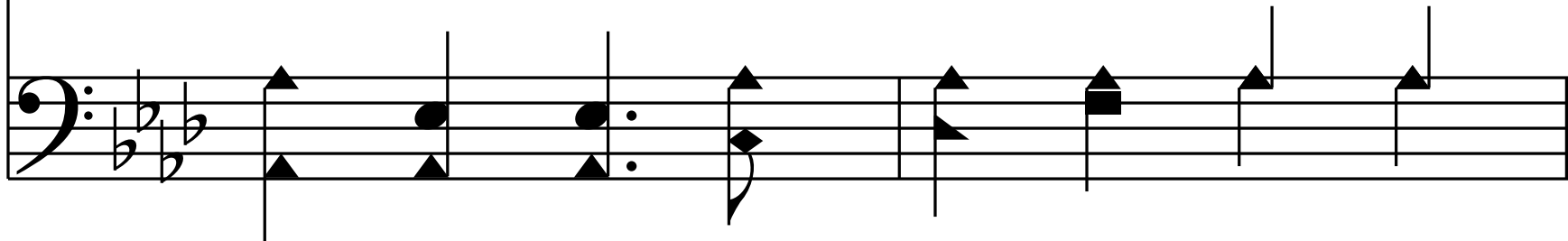
3. Yes, 'tis sweet to trust in Je - sus,

Just from sin and self to cease;

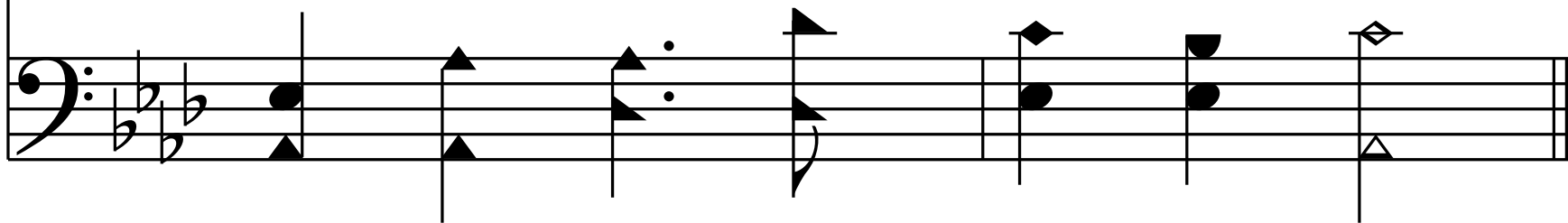
Just from sin and self to cease;



Just from Je - sus      sim - ply tak - ing



Life and rest, and joy and peace.



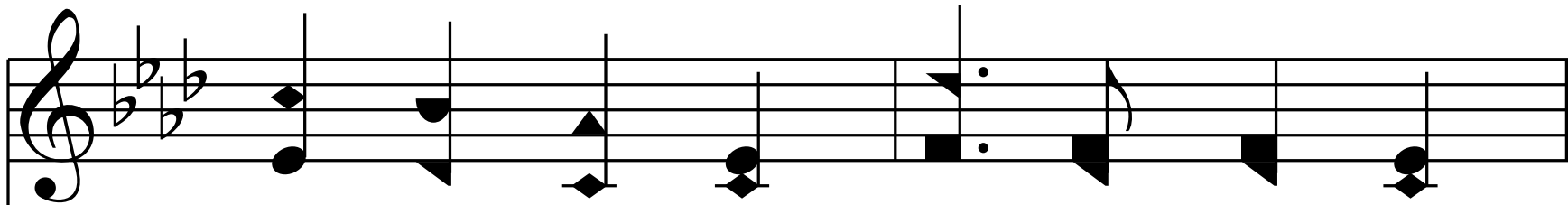
*Refrain*

Je - sus, Je - sus how I trust him!

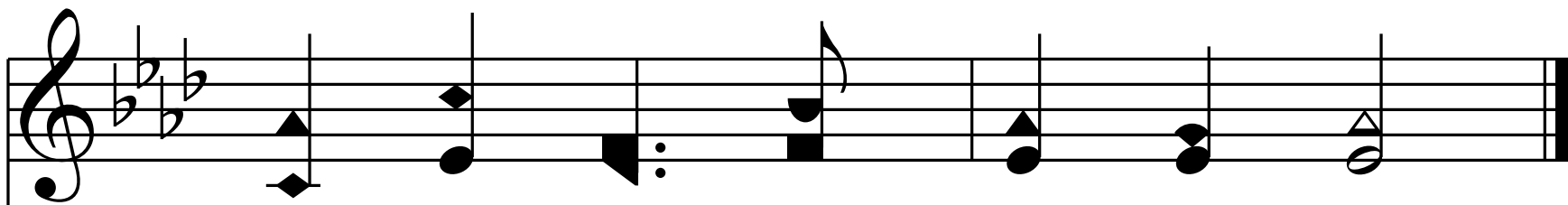
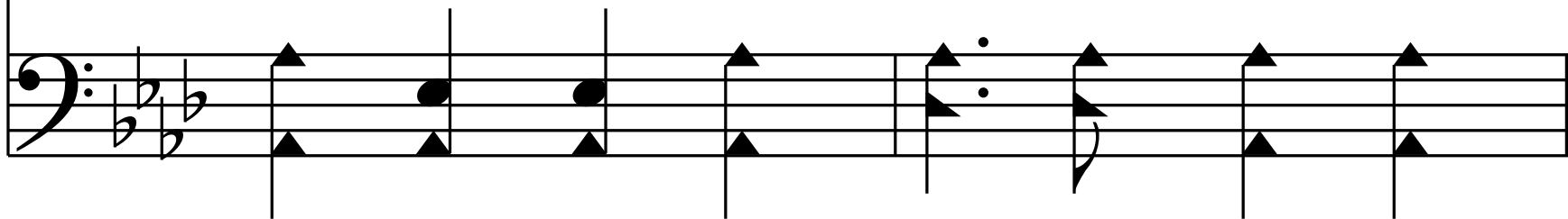
The first system of the refrain consists of two staves. The upper staff is in treble clef with a key signature of three flats (B-flat, E-flat, A-flat) and a common time signature. It contains a melody of quarter notes: G4, A4, B-flat4, A4, G4, F4, E-flat4, D4. The lower staff is in bass clef with the same key signature and time signature. It contains a bass line of quarter notes: G2, A2, B-flat2, A2, G2, F2, E-flat2, D2. The lyrics 'Je - sus, Je - sus how I trust him!' are centered between the two staves.

How I've proved him o'er and o'er!

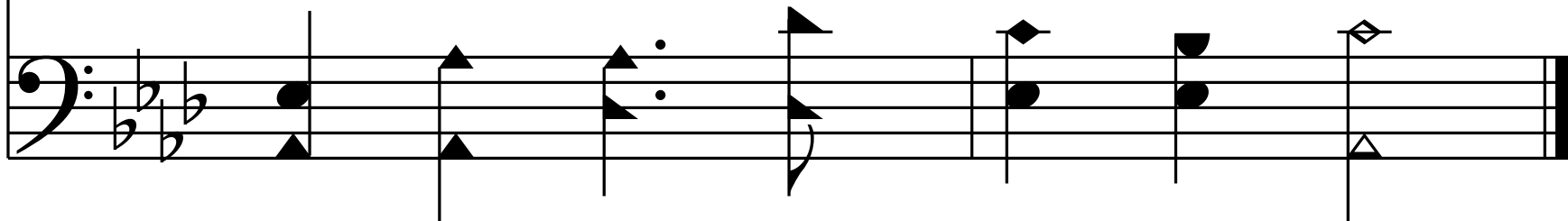
The second system of the refrain consists of two staves. The upper staff is in treble clef with a key signature of three flats and a common time signature. It contains a melody of quarter notes: G4, A4, B-flat4, A4, G4, F4, E-flat4, D4. The lower staff is in bass clef with the same key signature and time signature. It contains a bass line of quarter notes: G2, A2, B-flat2, A2, G2, F2, E-flat2, D2. The lyrics 'How I've proved him o'er and o'er!' are centered between the two staves.



Je - sus, Je - sus pre - cious Je - sus!

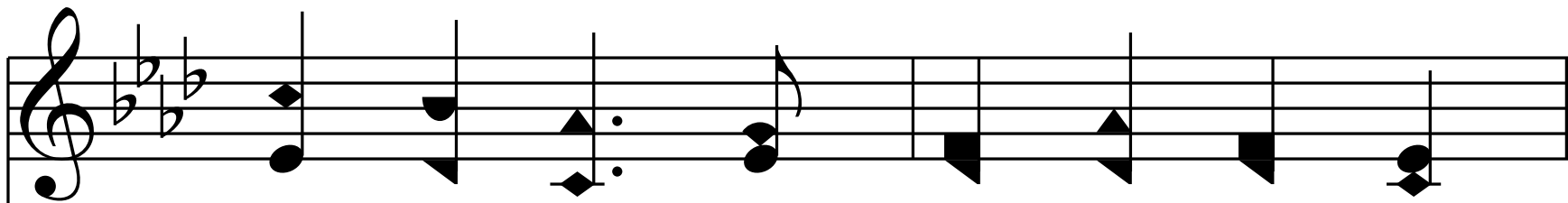


O for grace to trust him more.

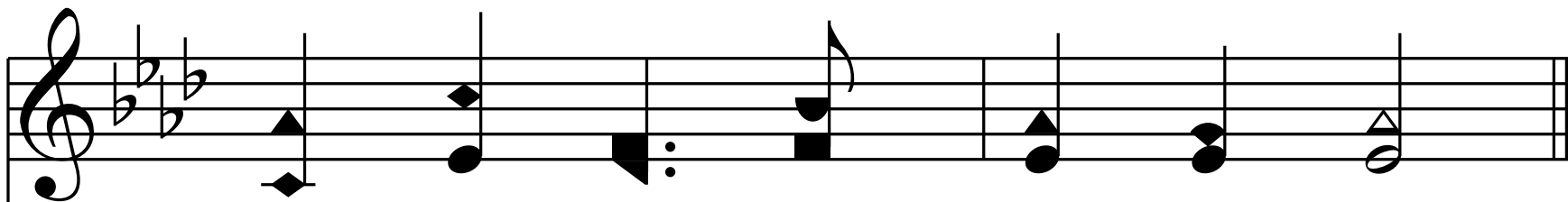
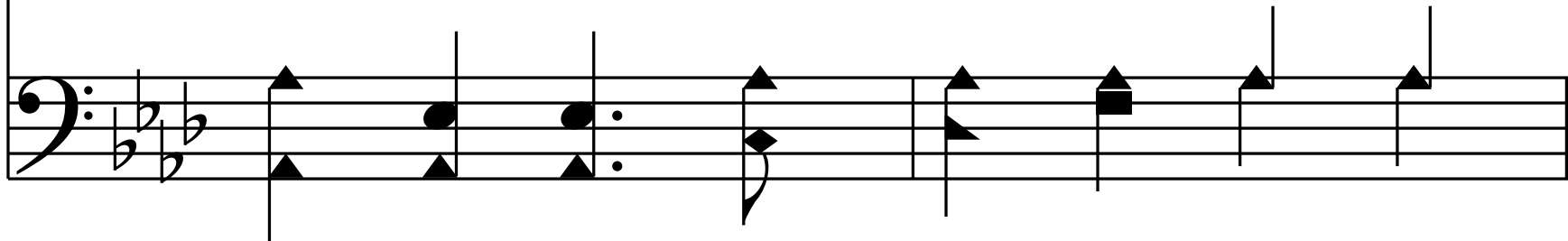


4. I'm so glad I learned to trust thee,

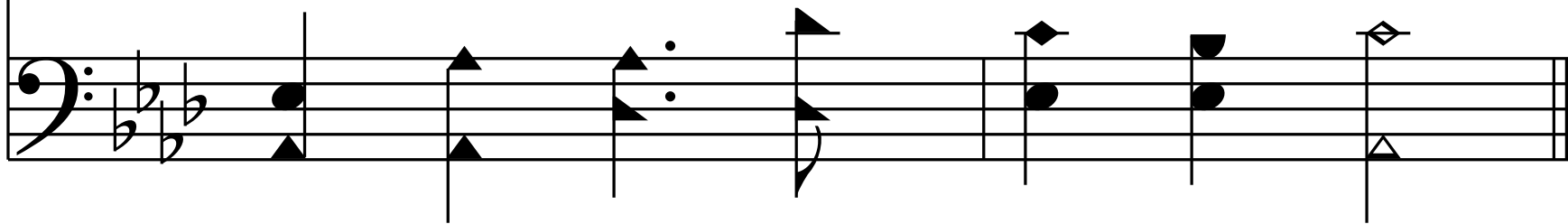
Pre - cious Je - sus Sav - ior, Friend;



And I know that thou art with me,



Wilt be with me to the end.



*Refrain*

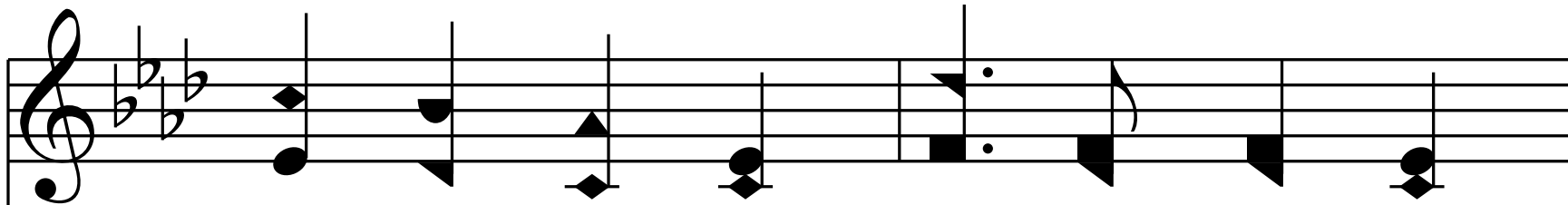
Je - sus, Je - sus how I trust him!

The first system of the refrain consists of two staves. The upper staff is in treble clef with a key signature of three flats (B-flat, E-flat, A-flat) and a common time signature. It contains a melody of quarter notes: G4, A4, B-flat4, A4, G4, F4, E-flat4, D4. The lower staff is in bass clef with the same key signature and time signature. It contains a bass line of quarter notes: G2, A2, B-flat2, A2, G2, F2, E-flat2, D2. The lyrics 'Je - sus, Je - sus how I trust him!' are centered between the two staves.

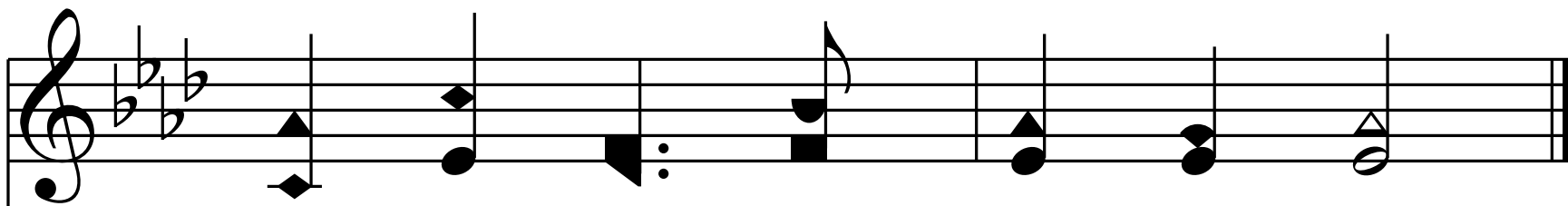
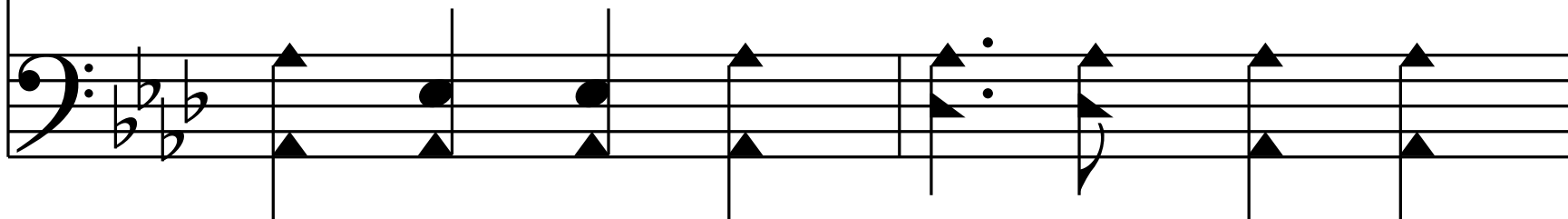
How I've proved him o'er and o'er!

The second system of the refrain consists of two staves. The upper staff is in treble clef with a key signature of three flats and a common time signature. It contains a melody of quarter notes: G4, A4, B-flat4, A4, G4, F4, E-flat4, D4. The lower staff is in bass clef with the same key signature and time signature. It contains a bass line of quarter notes: G2, A2, B-flat2, A2, G2, F2, E-flat2, D2. The lyrics 'How I've proved him o'er and o'er!' are centered between the two staves.

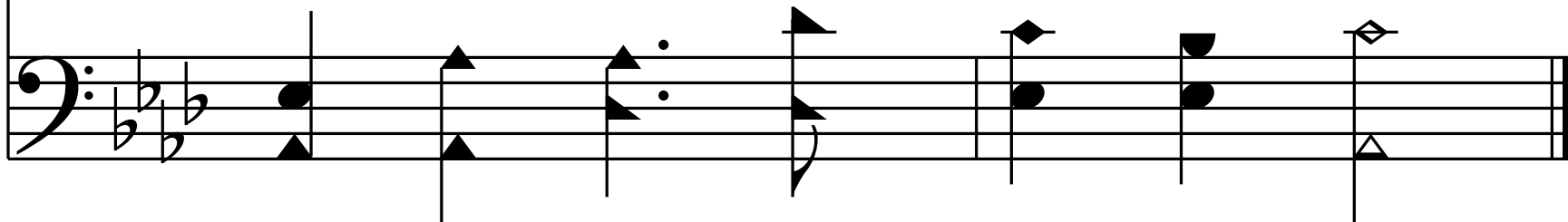




Je - sus, Je - sus pre - cious Je - sus!



O for grace to trust him more.



End of Hymn